

AXOR

# Water Stories



Escape  
the ordinary!

**Distinctive** bathroom collections | **Remarkable** water experiences

**Extraordinary** freedom of expression realized in collaboration with world-renowned designers.

MAGAZINE





AXOR

Escape  
the ordinary!

AXOR-DESIGN.COM

## AXOR

- 01 »Escape the ordinary!«
- 06 AXOR Designer
- 08 AXOR Style diversity
- 09 Why AXOR

## Collections

- 12 **Antonio Citterio**
  - AXOR Citterio C
  - AXOR Citterio
  - AXOR Citterio E
  - AXOR Citterio M
- 34 **Barber Osgerby**
  - AXOR One
- 42 **Philippe Starck**
  - AXOR Starck
  - AXOR Starck Organic
  - AXOR Starck V
- 54 **Jean-Marie Massaud**
  - AXOR Massaud
  - AXOR Edge
- 62 **Patricia Urquiola**
  - AXOR Urquiola
- 68 **PHOENIX**
  - AXOR Uno
  - AXOR Montreux
  - AXOR MyEdition

## Programs

- 82 **AXOR Showers**
  - AXOR ShowerSphere
- 94 **AXOR Shower Systems**
- 108 **AXOR Shower Controls**
- 110 **AXOR Accessories**
- 114 **AXOR Drain**
- 116 **AXOR FlushPlate**
- 118 **AXOR Bidette Showers**
- 120 **AXOR basins and bathtub**
  - AXOR Suite basins
  - AXOR Suite bathtub
- 122 **AXOR Kitchen faucets**

## Individualization

- 126 **AXOR FinishPlus**
- 128 **AXOR Signature**

# AXOR Novelties

PAGE 32

## AXOR One Assortment Extension

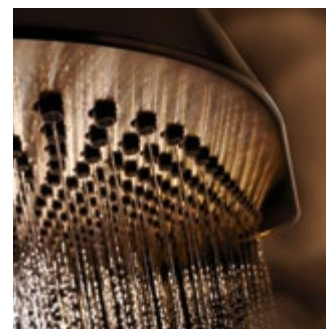
With the new product extension of AXOR One for the washbasin, bath and shower, Barber Osgerby build upon timeless elegance and innovative spirit of their acclaimed collection.



PAGE 116

## AXOR FlushPlate & AXOR BidetteShowers

Functional, elegant and universal, the AXOR FlushPlate by Barber Osgerby completes the bathroom with quiet distinction whereas the AXOR Bidette Showers elevates the bidet hand shower to a design object of outstanding functionality and elegant appeal.



PAGE 82

## AXOR ShowerSphere

AXOR ShowerSphere impresses with its unique elliptical design, its generous low-flow-spray and the wide variety of luxurious shower experiences it provides.



Since 1993, AXOR has led the way in transforming the bathroom into a place of personal luxury. Collaborating with world-leading designers, renowned for their distinctive styles and forward-thinking approaches, AXOR offers a product portfolio unrivaled for its stylistic diversity. Each faucet, shower, basin, tub and accessory has a character of its own, enabling people to bring their individual taste and style to every corner of the bathroom.

All of these products are available in the exclusive range of AXOR FinishPlus surfaces, allowing bathrooms to become even more personal. And for the ultimate in individualization, AXOR Signature can transform almost any AXOR piece into a one-of-a-kind creation. Uncompromising when it comes to quality and innovation, AXOR engineers and manufactures more than 90 percent of its products in Germany's Black Forest, ensuring water experiences without equal.

The AXOR commitment to stylistic diversity, quality and innovation is especially apparent in the shower, an intimate space that must be flexible and adaptable while providing an exceptional water experience. Sometimes understated, sometimes sculptural, always integrating seamlessly into our collections, AXOR showers come in a variety of configurations for a truly personalized shower experience. With their flawless design, intuitive function and innovative spray modes, from relaxing to immersive, they create an unrivaled shower experience.



Antonio Citterio



Barber Osgerby



Philippe Starck



Jean-Marie Massaud



Patricia Urquiola



PHOENIX



Nendo



Front



When AXOR first debuted the AXOR Starck collection by Philippe Starck at the 1993 Salon d'Eau, it introduced a simple yet groundbreaking concept to the world of bathroom design: work in close collaboration with the world's leading minds to create cohesive collections that are unique, personal expressions of style.

In the three decades that have passed since then, the AXOR Starck collection has become an enduring icon in bathroom design, inspiring countless users and architects alike with its timeless, masterful minimalism. And AXOR, asserting itself as a pioneer of personal luxury in the bathroom, has continued to stay true to this unique model of success, striking up exclusive collaborations with a careful selection of world-renowned designers.

From the signature Italian elegance of Antonio Citterio to the unorthodox geometries of Patricia Urquiola, each designer brings their own unique style and personality to the table. Conveyed with the German manufacturing excellence of AXOR, these designer's ideas become distinct collections that push the boundaries of bathroom design. As diverse as the personalities behind them, these collections offer a vast stylistic variety that sets AXOR apart and enables customers to express individuality—and pursue their own, personal ideas of luxury.

# Five reasons for AXOR

## 1. Design diversity

—

AXOR collaborates with internationally renowned designers. Innovative and timeless at once, their design approaches set standards again and again. With their highly distinct signatures, they shape the great stylistic diversity and product depth of the AXOR range, providing new inspiration for the development of the space, its use, and users to express their personality.

## 2. Individualization

—

The exclusive AXOR FinishPlus and AXOR Signature customization services meet customers' increasing demand for more options to customize bathroom products. With colored PVD surfaces and customized, bespoke solutions, AXOR products become unmistakably unique.

### 3. Outstanding quality, made in Germany

---

Ninety percent of our portfolio is assembled at the AXOR Centre for Excellence in Germany's Black Forest. Here, AXOR products are created with a focus on excellent quality and craftsmanship throughout their production. As part of our promise of long-lasting quality, AXOR offers an extended five-year warranty and a spare part availability on all products.

### 4. Sustainability

---

Developed exclusively in Europe in accordance with science-based targets, our products are designed to be timeless and built to last. AXOR adheres to eco-design principles\* and, with a goal of converting all products to water-saving\* technologies by 2030, seeks to promote sensible consumption of our most precious resource: water.

### 5. Worldwide presence

---

As part of the Hansgrohe Group, AXOR has 33 subsidiaries and 21 sales offices worldwide and supplies its products to over 146 countries. AXOR faucets, showers, and kitchen faucets can be found in the world's finest homes, hotels, and restaurants. International architects, planners, and builders trust AXOR quality in products and expert advice.



AXOR X CITTERIO



## Antonio Citterio

Nobody else has had an impact on Italian design like Antonio Citterio. As an architect, designer and perfectionist, he creates luxurious objects, interiors and architectural concepts for leading international brands. His signature shows an uncompromising combination of timeless forms and high-quality materials, always under the credo of perfection, of Italian elegance.



## AXOR Citterio C

“Slender, soft and sensuous, AXOR Citterio C meets our need for greater comfort, reduced materiality and a lasting, contemporary design that works in any bathroom setting.”

Slim, elegant and exceptionally refined, AXOR Citterio C reinterprets the washbasin faucet for a new era—one that demands ever more comfort and individuality from ever smaller bathroom spaces. Minimalist in spirit, with soft contours and a sensuous form, AXOR Citterio C invites the touch while delighting the eye from every angle. Distinctive yet understated, the collection is at home in any bathroom ambience.









The sleek form of the minimalist design is complemented by the faucet's resource-conserving Cool-Start function and a flow rate of just 5 l/min.



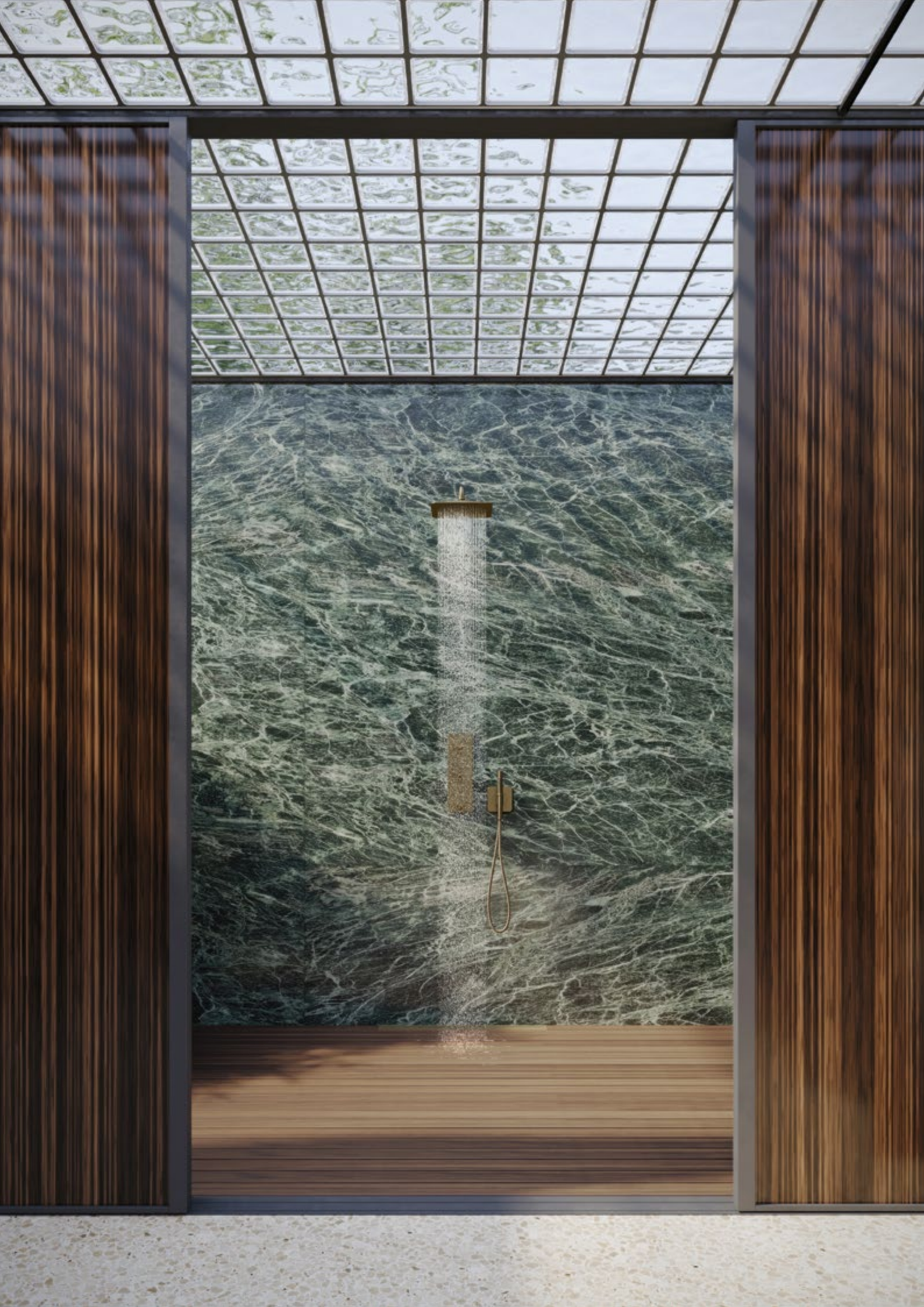
A subtle chamfer, its signature detail, encircles every piece of the AXOR Citterio C collection.



For those who wish to make a more personal statement, the handles of AXOR Citterio C are available in the unique cubic cut pattern as standard and other predefined textured patterns via AXOR Signature.



A wide range of products brings the subtle yet distinctive design language of AXOR Citterio C to every area of the bathroom.





AXOR CITTERIO

AXOR

AXOR Citterio

A contemporary classic

“Whoever enjoys the ritual  
of daily washing should do so  
with beautiful objects.”

ANTONIO CITTERIO







A range of elegant solutions brings the neoclassical design language of AXOR Citterio into the bathroom.



AXOR Citterio. An icon of modern bathroom design. Understated yet unmistakably luxurious, its distinctive flat surfaces brilliantly reflecting the light, this is a collection that celebrates the preciousness of water itself. With its balanced proportions and elegant geometries, AXOR Citterio is at home in any bathroom ambiance.

AXOR Citterio E

The essence of elegance







“AXOR Citterio E is a redesign of an everyday object. These little yet refined details are extremely important for our perceptions.”

ANTONIO CITTERIO

Familiar yet new, contemporary yet classic, dynamic yet understated. AXOR Citterio E affirms the wisdom of the Pythagorean principle, that harmony is to be found in the calm balance of opposites. A sophisticated synthesis of modern and archetypal forms, hard angles and sensuous curves, technological innovation and time-proven techniques of manufacture, the collection is best characterized by the word from which it derives its name. AXOR Citterio E is elegance itself.



**AXOR Citterio M**

For modern, metropolitan living



Inspired by life in the modern metropolis, where space is often at a premium, AXOR Citterio M defines an urban aesthetic of elegance and sophistication. Created with more confined spaces in mind, the collection is characterized by reduced and slender forms, delicately tapered and contoured. With its quiet presence and understated beauty, it transforms the bathroom into a retreat from the commotion of city life, a place in which to reinvigorate both mind and body. Versatile and adaptable, timeless yet modern, AXOR Citterio M is an ideal complement to virtually any bathroom décor.



An elegant aesthetic of slender forms and sensuous curves defines  
AXOR Citterio M

“The understanding of beauty is irrevocably bound to the age we live in. Today, reduction, simplicity and technology are the aesthetic sum of that which we acknowledge as beauty. If I have only a small room, it is even more important that I furnish it with carefully selected, valuable objects.”

ANTONIO CITTERIO





Classic in function, modern in design: The mixer comes to life in the tension between its traditional three-hole arrangement and the clear, uncomplicated form.

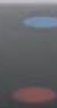


AXOR One

The essence of simplicity



AXOR



## Barber Osgerby

Barber Osgerby embody the philosophy of interaction design. They stand for the interaction of the user with the product—what they see, hear and need. An art of design that's led to international public commissions and international awards, including the title of Royal Designer for Industry and the Order of the British Empire.

Their multidisciplinary approach challenges the boundaries of industrial design, architecture and art. Along with furniture and lighting for leading global brands, Barber Osgerby have undertaken design projects ranging from the 2012 Olympic Torch to the two-pound coin for the Royal Mint to seating for the 12th-century Portsmouth Cathedral.



# AXOR One

“AXOR One provokes the memory of water but heralds a new way of controlling it that is much more precise and incredibly refined.”

EDWARD BARBER & JAY OSGERBY

A bathroom collection so elegant, elemental and pure it could be realized only through special innovation. Using Select Technology and a new mode of interaction, AXOR One reinvents familiar archetypes for greater clarity, enhanced function and superior control. Timeless by design and available in a wide range of forms and applications, the collection brings exquisite beauty to any bathroom.

Utilizing Select technology, the mechanical mixer handles enable precise, water-saving on/off and temperate control. Positioning the cartridge underneath the wash basin makes the exceptionally slim silhouette possible.

AXOR ONE





## AXOR Novelties

As alternatives to the collection's trademark lever and Select handle, the expansion introduces a new cross handle typology that, according to the designers, "traverses the space between traditional and modern".



AXOR Novelties



At the heart of this bathroom concept by Tara Bernerd is the iconic yet versatile AXOR One collection. Its sleek mix of straight lines and elegant curves providing the perfect starting point for this innovative cliffside bathroom retreat in Capri.





AXOR X STARCK



## Philippe Starck

Philippe Starck may be the world's most celebrated and influential designer. From juice-squeezers to electric bikes, personal windmills to pre-fab ecological houses, hotel interiors to space habitation modules, his work is guided by a vision of creation as the duty—poetic, political, rebellious, benevolent, pragmatic and subversive—to make life better for the largest number of people possible. Together with AXOR, in an enduring collaboration of more than 30 years, Philippe Starck has helped to revolutionize bathroom design.





## AXOR Starck

The collection that  
revolutionized  
bathroom design.





"Water is life", says designer Philippe Starck. This conclusion lead him to embrace for AXOR Starck the most simple, archetypal forms, those of a pipe and a bucket.

Its archetypal form, inspired by the traditional well pump, tells a story of beauty in simplicity. By reducing the faucet to pure essence, just two pipes and a joystick control, it focuses our attention on water itself. The luxury of it. The pleasure of it. The necessity of it. A collection as relevant today as it was at its launch more than 30 years ago, AXOR Starck may truly be described as The Original.





Timeless by design, AXOR Starck evokes the primitive hand pump, humanity's earliest means of drawing water. Encasing an ultra-slim cartridge to regulate the flow-rate, the iconic single-lever faucet consists of two cylinders—one a vertical base, the other a diagonal spout—crowned by a choice of pin or feather handle. Simple, rational, reduced to the essential, the mixers are adaptable to any bathroom décor.



“Nature loves economy. That’s why the AXOR Starck Organic collection looks so reduced, yet is full of invention. It is revolutionary.”

PHILIPPE STARCK



AXOR Starck Organic is a groundbreaking homage to the greatest minimalist of all: nature herself. The faucet mimics nature not just in its slender, flowing forms but in its economy of resources, producing an air-infused jet of water with a flow rate of just 3.5 liters per minute. A personal expression of taste, the collection is also a personal statement of commitment—to a more resource-conscious existence.



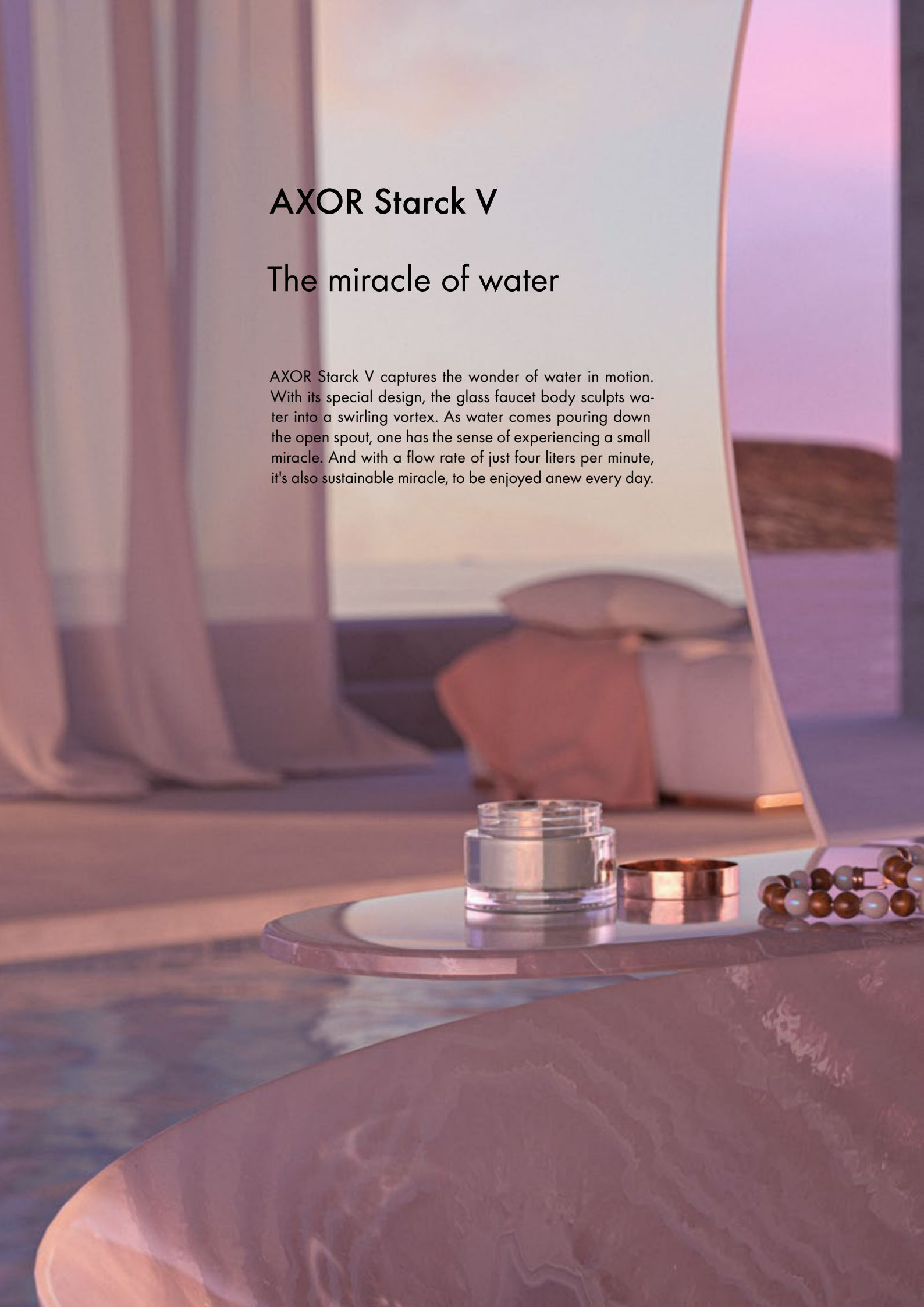
When turning on the AXOR Starck Organic faucet, the integrated water-volume control at the spout ensures no single drop is wasted, while the separate temperature control with pre-set function saves water, energy and that other most precious resource: time.

Characterized by slender, sculpted, energetic shapes that reference natural forms while offering tactile, ergonomic function, AXOR Starck Organic mixers constitute a landmark breakthrough in sustainable faucet design.

# AXOR Starck V

## The miracle of water

AXOR Starck V captures the wonder of water in motion. With its special design, the glass faucet body sculpts water into a swirling vortex. As water comes pouring down the open spout, one has the sense of experiencing a small miracle. And with a flow rate of just four liters per minute, it's also sustainable miracle, to be enjoyed anew every day.



AXOR STARCK V





AXOR X MASSAUD



## Jean-Marie Massaud

Since graduating from Paris' ENSCI-Les Ateliers in 1990, Jean-Marie Massaud has worked on projects in a vast range of scales and contexts. From a volcano-inspired football stadium in Mexico to a 'Manned Cloud' airship concept for ONERA to award-winning objects for everyday use, his work seeks to renew its subject through a thoughtful reconsideration of the stakes involved and an instinctive quest for elegance and lightness.

Massaud's unmistakable style provides refreshing stimulation—from product design to architecture. His creations are meant to touch people and provide a better place to live.







## AXOR Massaud

In harmony with nature

“As water leaves the mixer, it becomes a waterfall, the bathtub a lake. It’s magic. It looks so simple and effortless, and that’s the supreme elegance.”

JEAN-MARIE MASSAUD

Eliminating all traces of traditional bathroom design, AXOR Massaud sets the stage for a holistic experience. The faucet, sensuously organic, resembles a blade of grass. The spout, exquisitely thin, becomes an elegant shelf. The spray, perfectly shaped, takes the form of a silky natural waterfall. The bathroom itself is transformed into a space of well-being, a spa-like retreat for mind and body.

# AXOR Edge

## A jewel in the bathroom

“With AXOR EDGE, we wanted to create an emotion by surprising people. When quality is a must, when competence is a due, then emotion must be first. More than a faucet, each product in the collection is a jewel, a sculpture—a real, functioning piece of art that shares your intimacy for life. That’s my understanding of luxury.”

J E A N - M A R I E M A S S A U D

Inspired by the French tradition of arts décoratifs, AXOR Edge takes luxury in the bathroom to the next level. A sculptural composition of right-angled prisms, the faucet is ground and polished using a diamond-tipped tool from the aerospace industry. With surfaces of incomparable smoothness and textures milled with micron precision, AXOR Edge shines like a jewel in the world’s most distinctive bathrooms.





**AXOR Urquiola**

An artful fusion of styles

AXOR URQUIOLA



## Patricia Urquiola

A leading voice of contemporary design, Patricia Urquiola was born in Spain and completed her studies in 1989 at the Politecnico di Milano under Achille Castiglione. Her work often triggers emotions by reinterpreting familiar shapes and references. A recipient of numerous international awards and prizes, Urquiola has been named designer of the year by numerous publications and even designer of the decade. Her creations appear in various museums and collections, including the MoMA in New York, the Musée des Arts in Paris and the Triennale Museum in Milan.







Distinctive carved-out handles characterize the design of AXOR Urquiola.

AXOR Urquiola artfully combines shapes that recall different eras and styles of design. With its unconventional asymmetries, expressive flourishes and surprising mix of flat and rounded surfaces, the collection is equally at home in minimalist settings, where its striking originality is the focus, and in eclectic settings, where it naturally blends with the mixed décor.



“The bathroom comes alive through little memories and personal items that make a room a home. There are things which are vintage, elements which are contemporary design, but I think when you see all of it, there is a mix of new and some nostalgic pieces. Everything lives together. It’s not a bathroom, it’s part of my intimacy. The mixer has to be personal, just as with AXOR Urquiola.”

PATRICIA URQUIOLA

AXOR Urquiola complements a wide range of designs and styles.





AXOR URQUIOLA



## PHOENIX

PHOENIX is a leading international firm for product and interaction design. Modern proponents of the Bauhaus and Ulm School traditions in German design, PHOENIX is driven by the desire to create smart, sensible, substantial brand experiences that touch people. Internationally honored with more than 800 design awards for products ranging from office chairs to service robots to smartphones, PHOENIX is widely regarded as a pioneer in the field of bathroom design.







AXOR UNO

**AXOR Uno**

Purity of form and function





AXOR Uno features a radically reduced aesthetic that encases state-of-the-art technology for effortless control of water volume and temperature - all at the touch of a button via Select technology, or with a simple push of the intuitive Zero handle.

“AXOR Uno is guided by logic, morality, and magic. For me, morality ultimately means the social and environmental responsibility we have as designers. Magic means creating products that people love. And logic is evident in the collection. Because of that, it’s more beautiful. Understanding a product contributes to the aesthetic experience. AXOR Uno is proof of that.”

TOM SCHÖNHERR, PHOENIX

AXOR Uno celebrates the simple shapes that come together in a purist-inspired archetypal design. The faucet consists of pipes—the original form of water transport—assembled at precise right angles. Based on the golden ratio, the proportions are balanced and aesthetically pleasing. Drawing on the power of simplicity, the form projects great strength.





AXOR Montreux

Belle époque meets  
state-of-the-art.



For an authentic Belle Époque look, AXOR Montreux includes low-spout faucets, bridge mixers and classic cross handles with porcelain inlays.



A choice of high-spout mixers, three-hole mixers and lever handles offer a modern interpretation of the AXOR Montreux style.

“AXOR Montreux reinterprets the features of the early 20th century with great precision and workmanship, offering users the best in design and functionality.”

ANDREAS DIEFENBACH , PHOENIX

AXOR Montreux draws inspiration from the first industrially produced mixers, which became a fixture of the grand hotels of Europe at the turn of the last century. With its slip-fit pipes and porcelain inlays, the collection is as authentic in its detail as it is contemporary in its manufacture. Ideal for traditional bathrooms, it can also provide a sophisticated contrast in modern, minimalist spaces.

# AXOR MyEdition

The ultimate in personalization

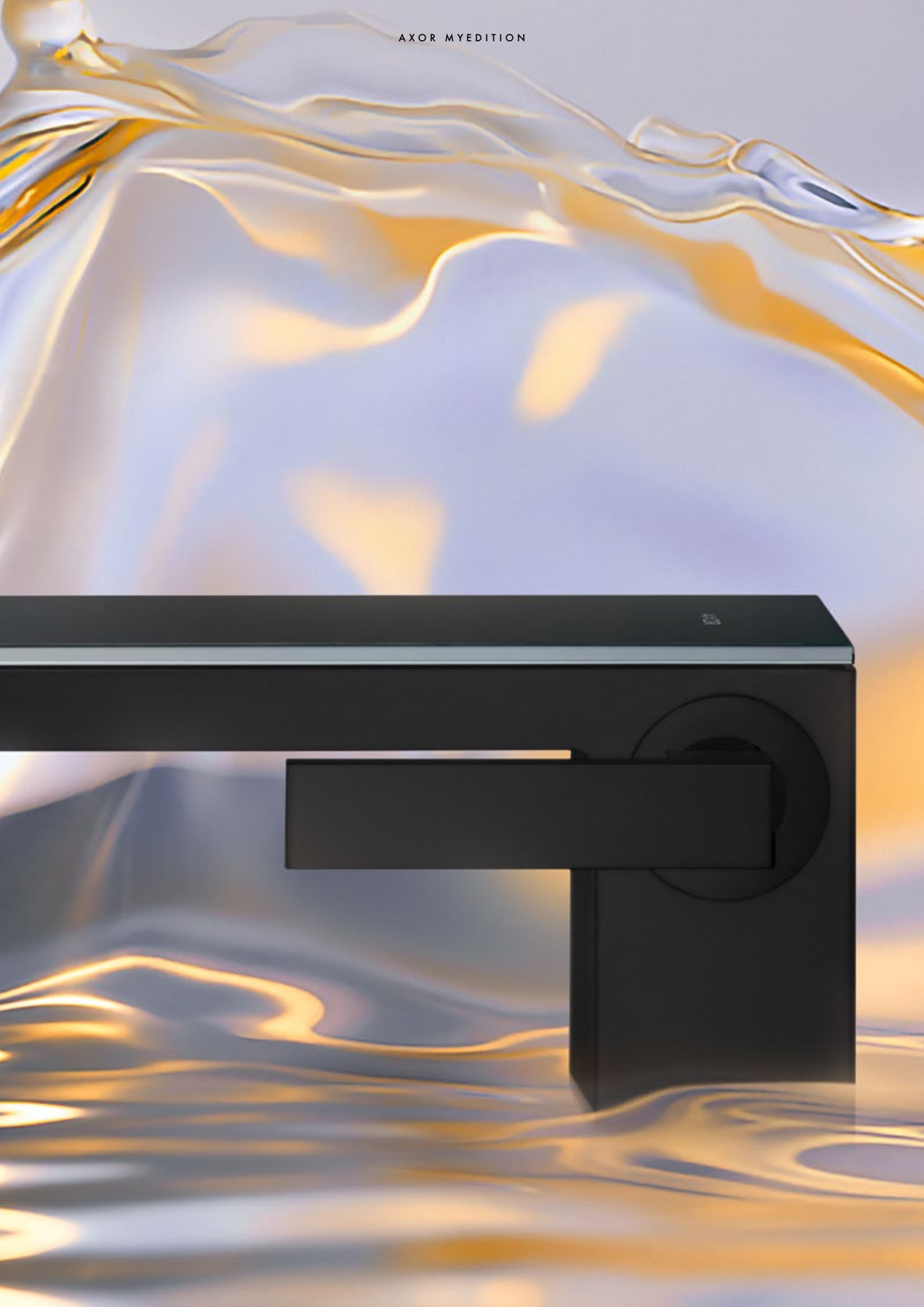
“Making a personal statement through customized interiors is the essence of luxury. With AXOR MyEdition, we’ve created a blank canvas, setting the stage for personal creativity. The collection is a creative kit for escape and imagination.”

ANDREAS DIEFENBACH , PHOENIX





AXOR MY EDITION



The AXOR MyEdition mixer body is crowned by a replaceable, rectangular cover plate, available in a choice of one of eight luxurious and sophisticated materials. Developed with painstaking care, crafted with masterly precision and tested under extreme conditions, each plate is unique. For those seeking the ultimate in personalization, AXOR also offers a special, easily-exchangeable cover plate for customers to adorn with their own, personally chosen designs. In this way, a personal statement becomes a meaningful narrative, symbolizing a certain element, a special mood, a remembered landscape, a lasting image. The ideas materialized in the mixer's cover plate and surface finish reflect the texture of one's own identity.



At the wash basin, AXOR MyEdition is available as a single-lever mixer in three different heights, as a wall-mounted mixer and as a classic three-hole mixer.



With its rectilinear design and generous flat surfaces, AXOR MyEdition is your stage for self-expression. Select from a range of exclusive cover plates—in rich Nappa leather, warm black walnut veneer, cool white Lasa marble or radiant mirrored glass—or dream up your own custom plates. Either way, AXOR MyEdition makes an elegant, timeless statement of personal luxury in the bathroom.



AXOR SHOWERS



AXOR  
Showers

Designed by

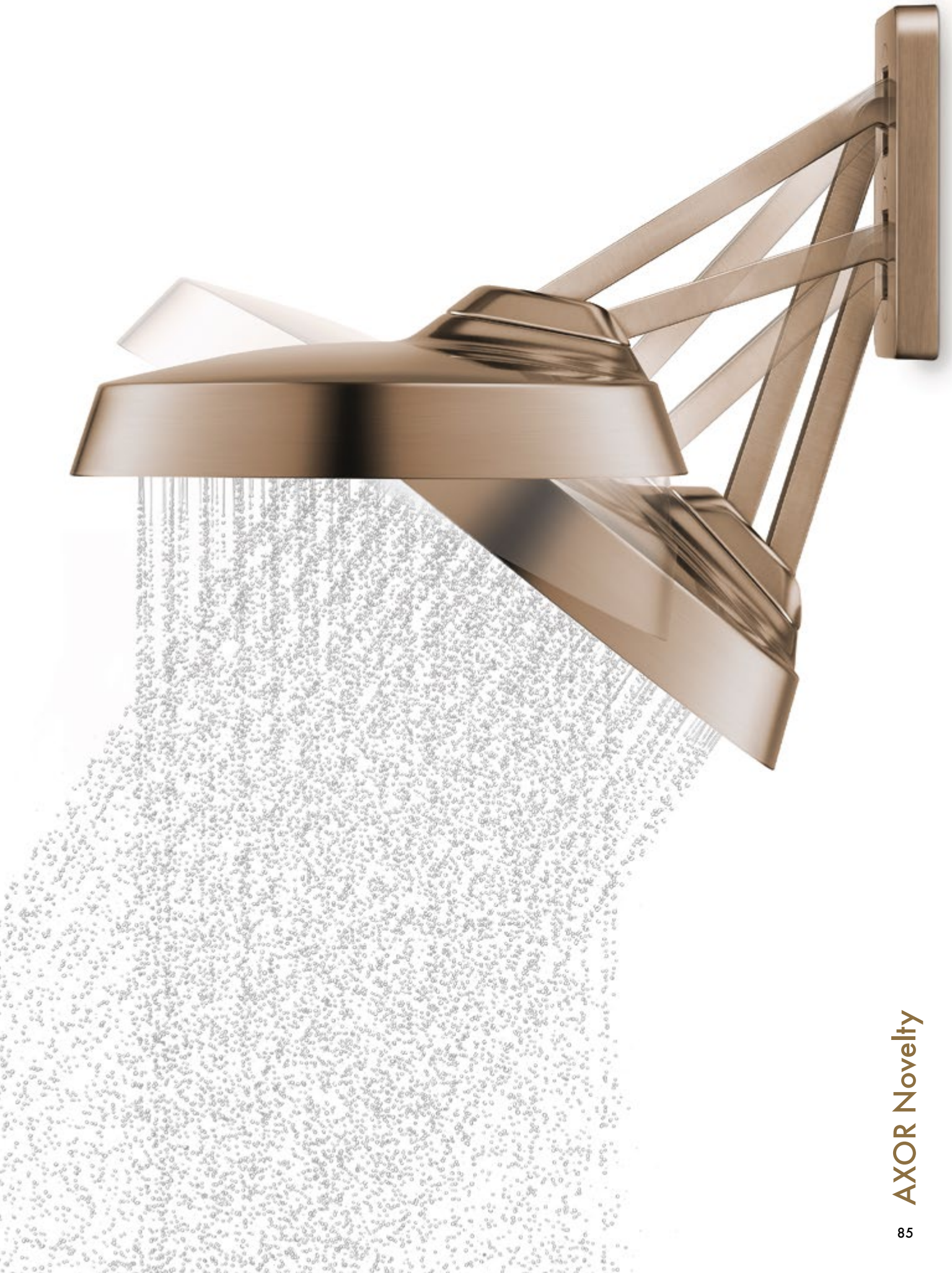
Antonio Citterio  
Philippe Starck  
PHOENIX  
Nendo  
Front  
Barber Osgerby

## AXOR ShowerSphere

More comfort. Less water. A new shape but the same timeless, characteristic elegance.

Antonio Citterio's latest shower program, AXOR ShowerSphere, impresses with its unique elliptical design; its generous low-volume spray; and the wide variety of luxurious shower experiences it provides.

Comprehensive in its offering, extraordinary yet universal in design, AXOR ShowerSphere excels in virtually any bathroom environment while harmonizing exquisitely with products across the AXOR portfolio and Citterio's other collections in particular.



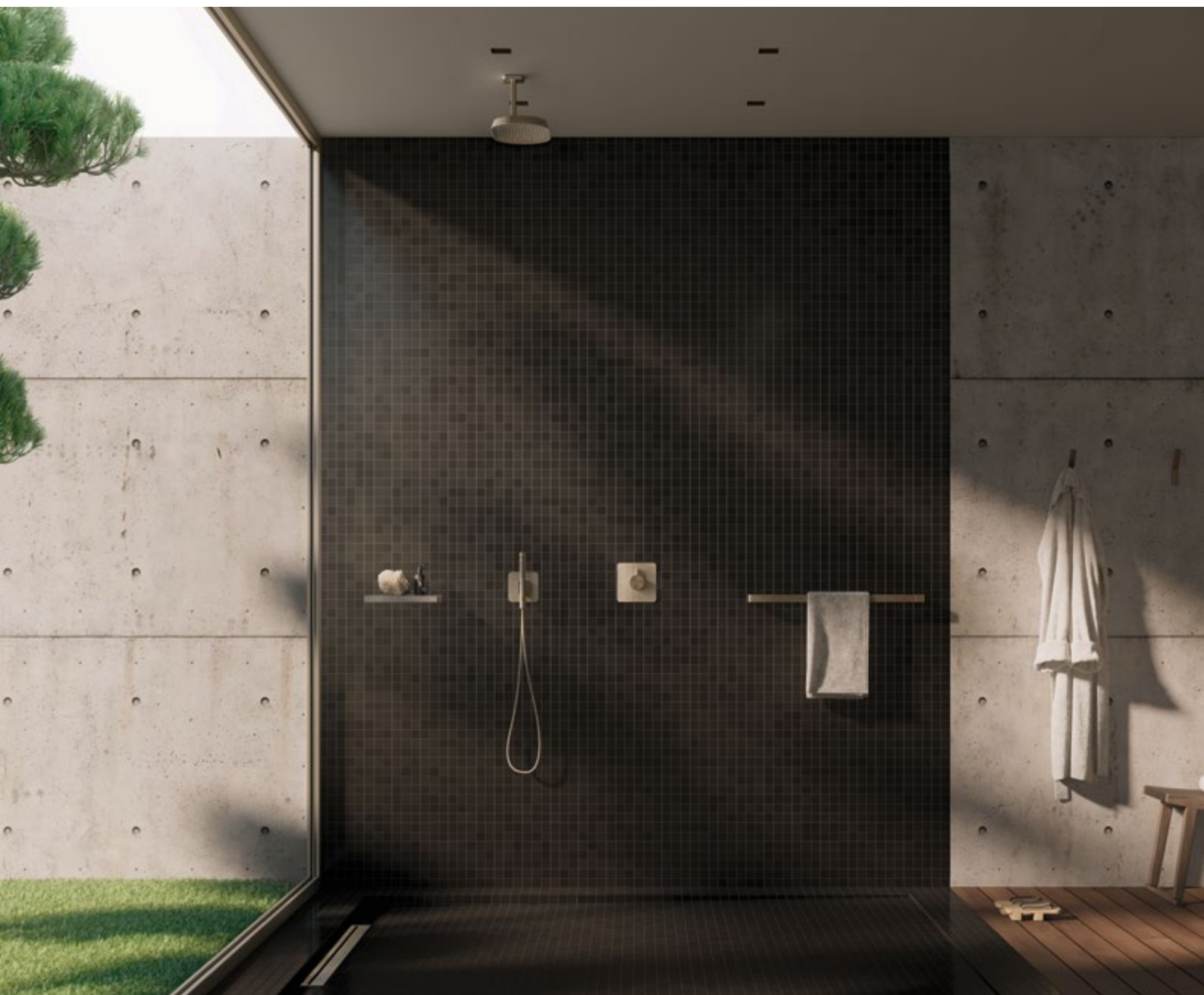


The unique design of AXOR ShowerSphere is characterized by a monolithic, ovaloid shower cover with slanted edges, supported by a minimalist softsquare escutcheon and shower arm.



# AXOR Novelty

The unique design of AXOR ShowerSphere makes for exciting combinations with different AXOR collections.



# AXOR LampShower

## A source of light and water

The AXOR LampShower created by Nendo integrates lighting with the shower to form an exclusive design object. A transparent body and O-shape shower cover wrap around a visible lamp characterize the design of AXOR LampShower. A delightful interplay of the senses results: The lamp blurs the lines that normally define a space to ring a sense of coziness to the shower, while a wide wreath of rain completely surrounds the body with water.



AXOR SHOWERS

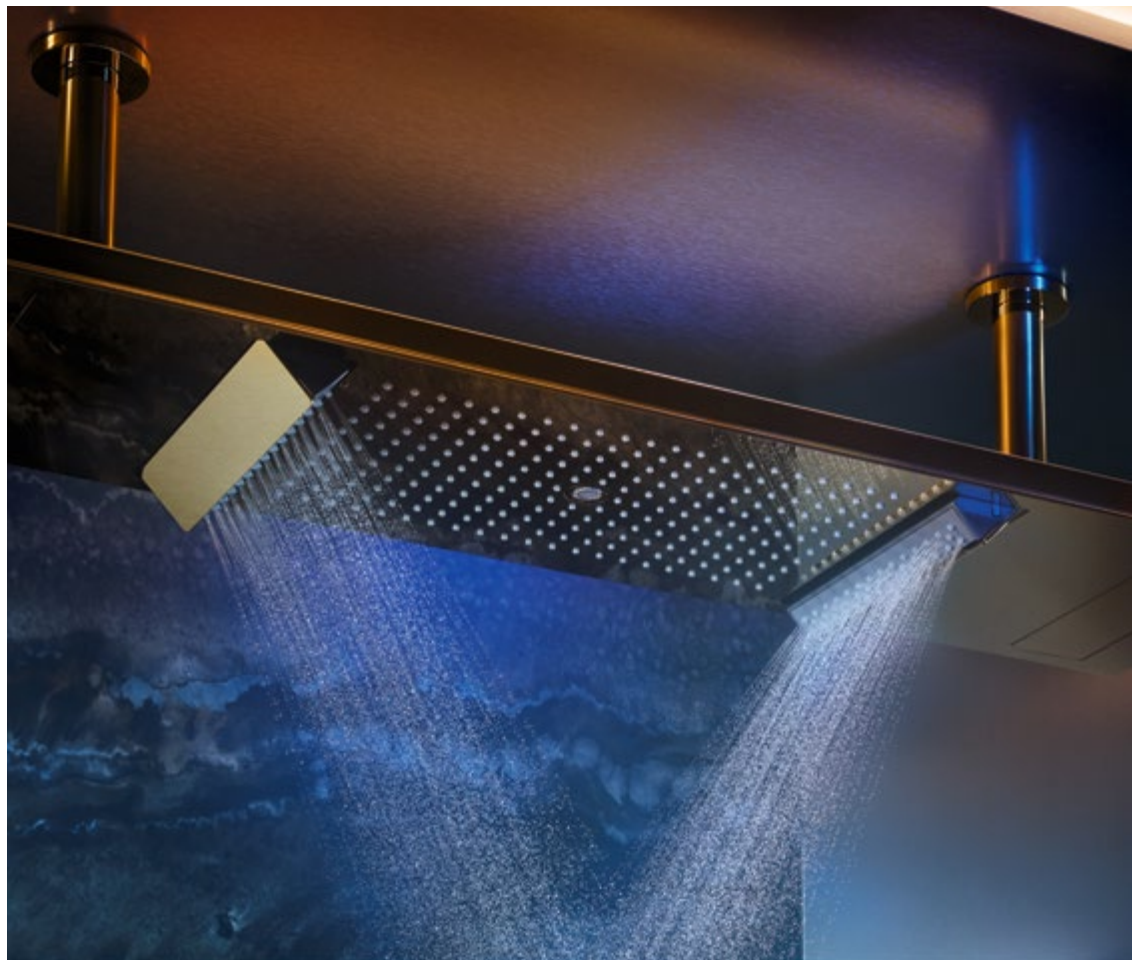




# AXOR ShowerHeaven

## Luxury from above

AXOR ShowerHeaven 1200/300 4jet is a new archetype in the shower, offering a grand stage for water. Here, it is staged in an extraordinary way: with a revitalizing water jet, a soothing rain shower, all the way up to the gentle PowderRain—the AXOR innovation in water design that envelops the body like a cocoon of water with velvety-soft water droplets.



# AXOR Conscious Showers

## Make the most of your rituals.

Taking a shower is one of the most precious moments of the day. AXOR has developed the AXOR Conscious Showers to make this ritual both pleasurable and responsible. The showers meet specific requirements for sustainable water use while setting the highest aesthetic standard. Whether circular or rectangular, the showers are available in a full range of brilliant, durable AXOR FinishPlus surfaces, including lacquered Matt Black, and can be combined with any AXOR bathroom collection. All three AXOR Conscious Showers offer a uniquely satisfying combination of a large shower-head with a powerful spray that covers the body and a low flow rate from 6 l/min. AXOR Conscious Showers personally express one's conscious approach to the precious things in life.



AXOR SHOWERS



AXOR  
**Shower Systems**







# AXOR Starck Shower Column

Radically minimalist in design, the AXOR Starck shower column focuses the attention on water itself. Exposed or concealed, the thermostatic mixer provides precise regulation of water temperature and flow volume. And from above, the generously sized showerplate uses RainAir technology to cocoon the user in superfine droplets. Available with PowderRain spray type as standard, AXOR Starck also offers a dual spray hand shower with both immersive Rain and concentrated MonoRain spray types.



Uncompromisingly streamlined, the shapes come together to form a unique whole: a circle. A cylinder. A rod. The result is a one-of-a-kind shower column.

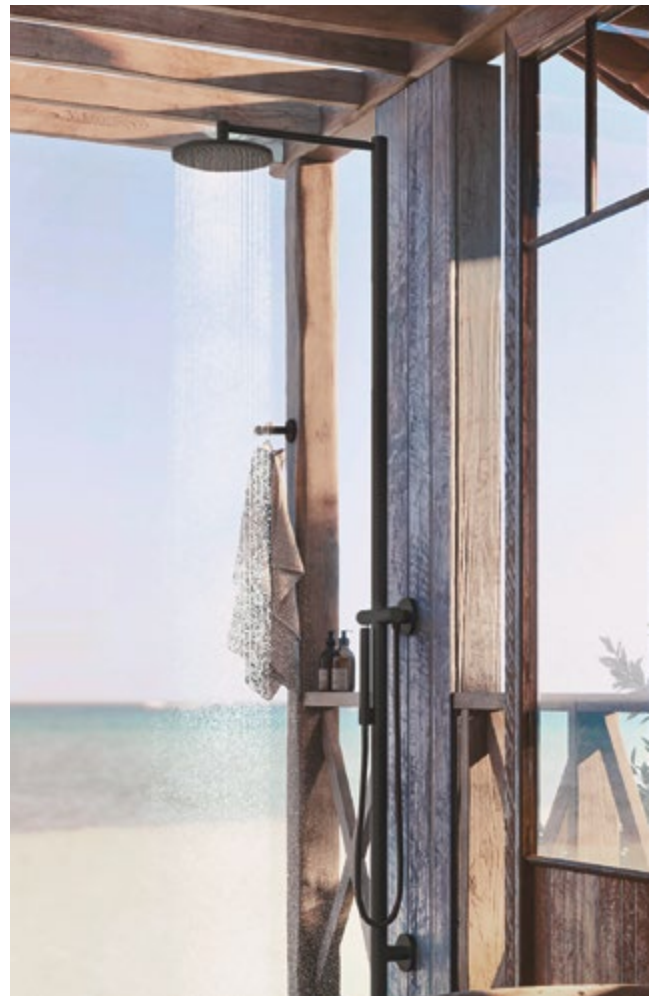




## AXOR Starck Nature Column

The demand for 'outdoor living' continues to grow as more people recognize the importance of nature in modern life and seek new connections with it. Lifestyles are increasingly shifting outdoors—a trend that goes beyond the bathroom and calls for well-designed products for this new living space.

Developed in collaboration with Philippe Starck, the AXOR Starck Nature Shower Column meets the requirements for an aesthetic, durable and reliable product for outdoor use: minimalist and iconic in design, precise in operation and offering maximum showering comfort, the shower column celebrates the luxury of water and provides showering pleasure in the open air.



# AXOR ShowerComposition

A shower is a very intimate space, and it must be flexible and adaptable to an individual's needs. Designed by world-renowned creator Philippe Starck, AXOR ShowerComposition introduces a striking new universal design language, modern and timeless, to the shower area. The program features sleek, flat surfaces and ultra-slim profiles in an architectonic composition that presents novel possibilities for individual expression.





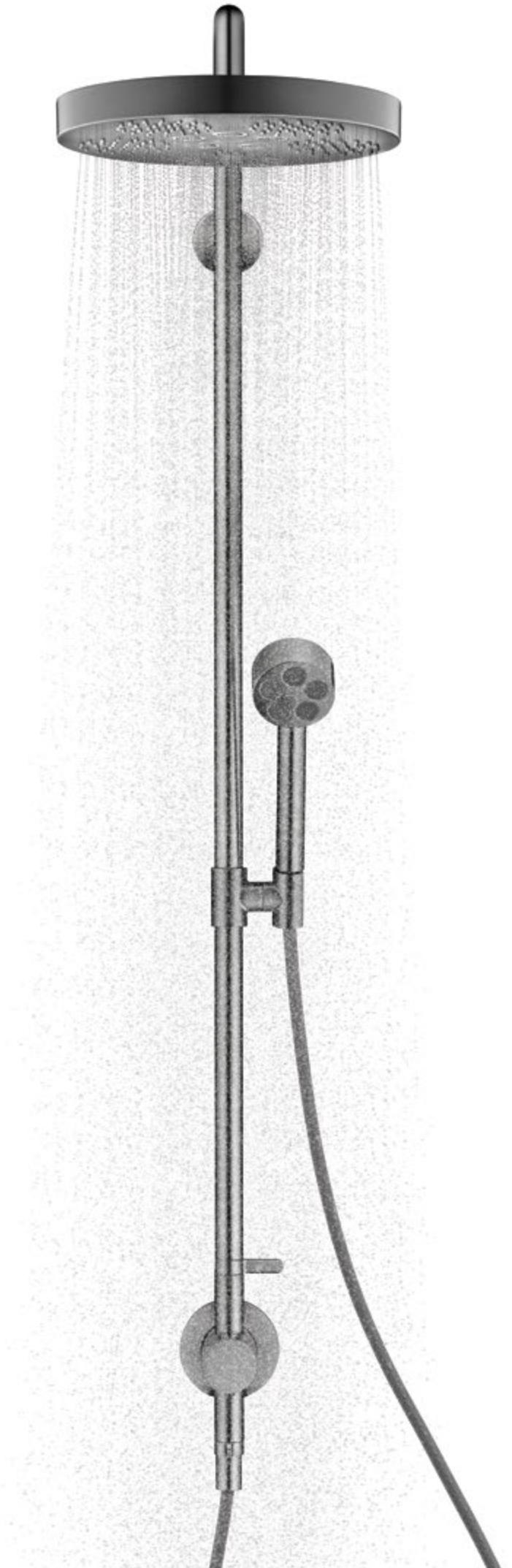
Whether as an all-in-one shower panel or a personalized arrangement of floating modules, AXOR ShowerComposition offers exceptional performance, including immersive PowderRain spray mode overhead and PowderRain shoulder showers with angle adjustment.

## AXOR One Showerpipe

The radical minimalism and outstanding performance that define the faucets of AXOR One apply equally to its shower selection. The AXOR One showerpipe with thermostat and overhead shower 280 1jet for concealed installation combines an overhead shower, hand shower, wall bar and thermostat into a single product and offers a clean appearance thanks to the cohesive design elements. The overhead showers and hand showers of AXOR One feature sleek forms and an innovative organization of Rain and PowderRain spray types, reflected in the distinctive graphic language of the spray disc.



AXOR SHOWER SYSTEMS





## AXOR Showerpipe 800

The AXOR Showerpipe 800 provides an integrated system solution, consisting of a thermostatic mixer, overhead shower and hand shower, all in the purist pipework design of the AXOR Uno collection. Select technology allows for easy operation of the Showerpipe with its integrated AXOR overhead shower 350 1jet and innovative Powder-Rain spray mode.

## AXOR Montreux Showerpipe

Authentic showering with the AXOR Montreux Showerpipe. Externally: Belle Époque. Internally: state of the art. With cutting-edge thermostat Technology and clearly separate control units for its overhead and hand showers. Committed to technological advancement.





## AXOR Showerpipe by Front

The AXOR Showerpipe by Front design expresses a contemporary reinterpretation of traditional workmanship and industrial design. This approach manifests in the slender body of AXOR ShowerPipe, encompassing an integrated thermostat, hand shower and conical overhead shower in a refined juxtaposition of shapes and angles. Or, as the designer simply puts it, "we wanted to highlight the hidden aesthetics of the technology in an elegant way and create a charming product out of tubes, valves and funnels". Playful yet understated, AXOR Showerpipe brings an archetype of design into the present.





Photograph: Peer Lindgreen



# AXOR Shower Controls

An comprehensive range of specially-designed, complementary products enhances the AXOR Shower range, enabling the creation of holistic and deeply-customizable shower experiences.

Designed by

Antonio Citterio  
Jean Marie Massaud  
Philippe Starck  
PHOENIX  
Barber Osgerby

Developed in collaboration with PHOENIX, the concealed thermostatic mixer extends just 45 mm from the wall, a feat made possible by the new AXOR iBox universal 2. Within these sleek confines, a central temperature control dial offers satisfying haptic and auditory feedback while surrounding paddles utilize the latest Select technology, allowing for quick, easy switching among spray types and outlets AXOR ShowerSelect ID is characterized by ultra-precise control, universal design styles and unique customization options. Users can combine AXOR ShowerSelect ID thermostats to cover up to four outlets, with each Select paddle representing one outlet (e.g., a hand shower or spray function). With three design styles to choose from—round, square or softsquare—as well as a wide range of AXOR FinishPlus surfaces and AXOR Signature custom inlay options, AXOR ShowerSelect ID is more than a marvel of technology and design. As its name suggests, it's a unique opportunity to express one's individual identity, taste and style.

## AXOR Accessories

Completing the look. A full range of accessories extends the look and finish of the AXOR collections to every area of the bathroom. The range includes the AXOR Universal Accessories program, designed by Antonio Citterio, and AXOR Universal Circular Accessories, designed by Barber Osgerby. From shelves to mirrors, toothbrush tumblers to towel rails, each individual AXOR accessory is a unique design object.

Designed by

Antonio Citterio  
Jean Marie Massaud  
Philippe Starck  
PHOENIX  
Barber Osgerby



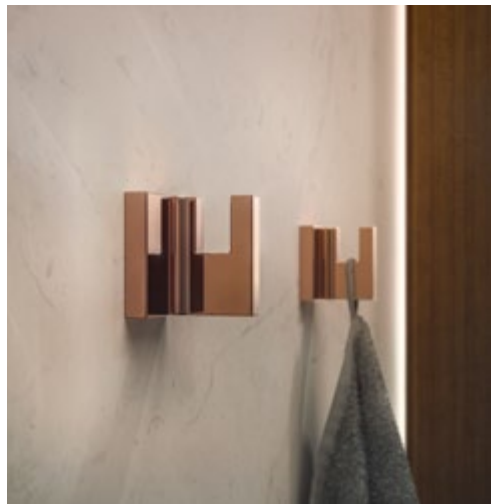




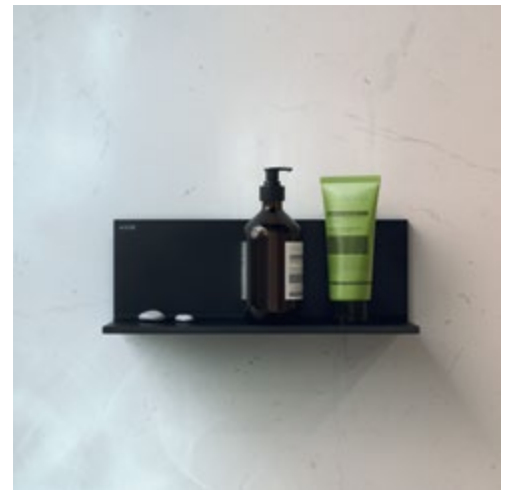


The AXOR Universal Circular towel ring by Barber Osgerby features corners rounded like quarter-circles, extending the program's circular theme to a rectangular form and ensuring compatibility with a wide range of AXOR bathroom products

The subtle, geometric design of the AXOR Universal rectangular towel hook understatedly complements all types of minimalist bathrooms.



A convenient shelf adds storage space without distracting from the design and finish of the selected AXOR shower products. The shower shelf features geometrically rounded corners, maintaining the circular theme of the AXOR Universal Circular Accessories.



The AXOR Universal Rectangular shelf provides maximum storage with a minimal footprint.



The AXOR Universal Softsquare towel hook impresses with its subtle, sensuous form.

## AXOR Drain

The shower drain becomes a design object.

AXOR Drain elevates the shower drain to an object of design that completes the look of any AXOR bathroom. Available in the same rich range of AXOR FinishPlus colors and surfaces as the AXOR collections and programs, AXOR Drain makes an individual statement grounded in excellent function.

The first drain in the AXOR program offers a sleek and seamless aesthetic, without visible silicone joints, harmonizing with various shower floor surfaces—from marble to porcelain, travertine to slate. Thanks to newly acquired innovative technology and outstanding AXOR quality, the drains are easy to install, require minimum cleaning and offer uncomplicated access to one's choice of Siphon or Dryphon draining mechanism.



AXOR

A horizontal, brushed metal drain strip is centered in the upper portion of a light purple and white marble background. The drain has a thin black line above and below it. The background shows a soft, ethereal light source from the left, creating a gradient of colors.



AXOR

A horizontal, brushed metal drain strip is centered in the middle of a green and white marble background. The drain has a thin black line above and below it. The background features a similar light source from the left, highlighting the intricate patterns of the marble.



AXOR

A horizontal, brushed metal drain strip is centered in the middle of a dark green grid tile background. The drain has a thin black line above and below it. The background is a uniform grid of dark green tiles with light-colored grout.



# AXOR FlushPlate

## The perfect finishing touch

Functional, elegant and universal, the AXOR FlushPlate by Barber Osgerby completes the bathroom with quiet distinction. Through its refined parallel-push technology and robust construction, the design elevates operation to a haptic experience that is satisfying and effortless. The AXOR FlushPlate is designed for flat-wall installation and compatible with the Geberit Sigma concealed flushing system. An elegant solution sure to match any bathroom interior. Available in all AXOR FinishPlus surfaces, the AXOR FlushPlate makes a sophisticated statement while complementing the assortment of every AXOR collection.

AXOR Novelty

The AXOR FlushPlate features a monolithic softsquare design with two identical circular flush buttons at its center.



# AXOR Bidette Showers

The AXOR Bidette Showers elevate the bidet hand shower to a design object of outstanding functionality and elegant appeal. Designed for effortless one-handed operation, the hand shower features a trigger control to easily adjust the flow rate and spray intensity. For added safety and efficiency, the water supply is automatically shut off as soon as the hand shower is placed back into the porter. The AXOR Bidette Showers are available in the vast range of AXOR FinishPlus surfaces to complement all AXOR collections and programs.

The AXOR Bidette Showers are distinguished by its essentialist design, ergonomic handle and feather-shaped spray trigger.





AXOR BIDETTE SHOWERS



**AXOR Suite**

Basins & Bathtub





AXOR basins and bathtub provide the perfect finishing touch to any bathroom setting. Designed in collaboration with the world-renowned designer Philippe Starck and made with a state-of-the-art mineral casting process, these award-winning products excel both in aesthetics and performance.

## AXOR Kitchen

The gastronomic ideal.

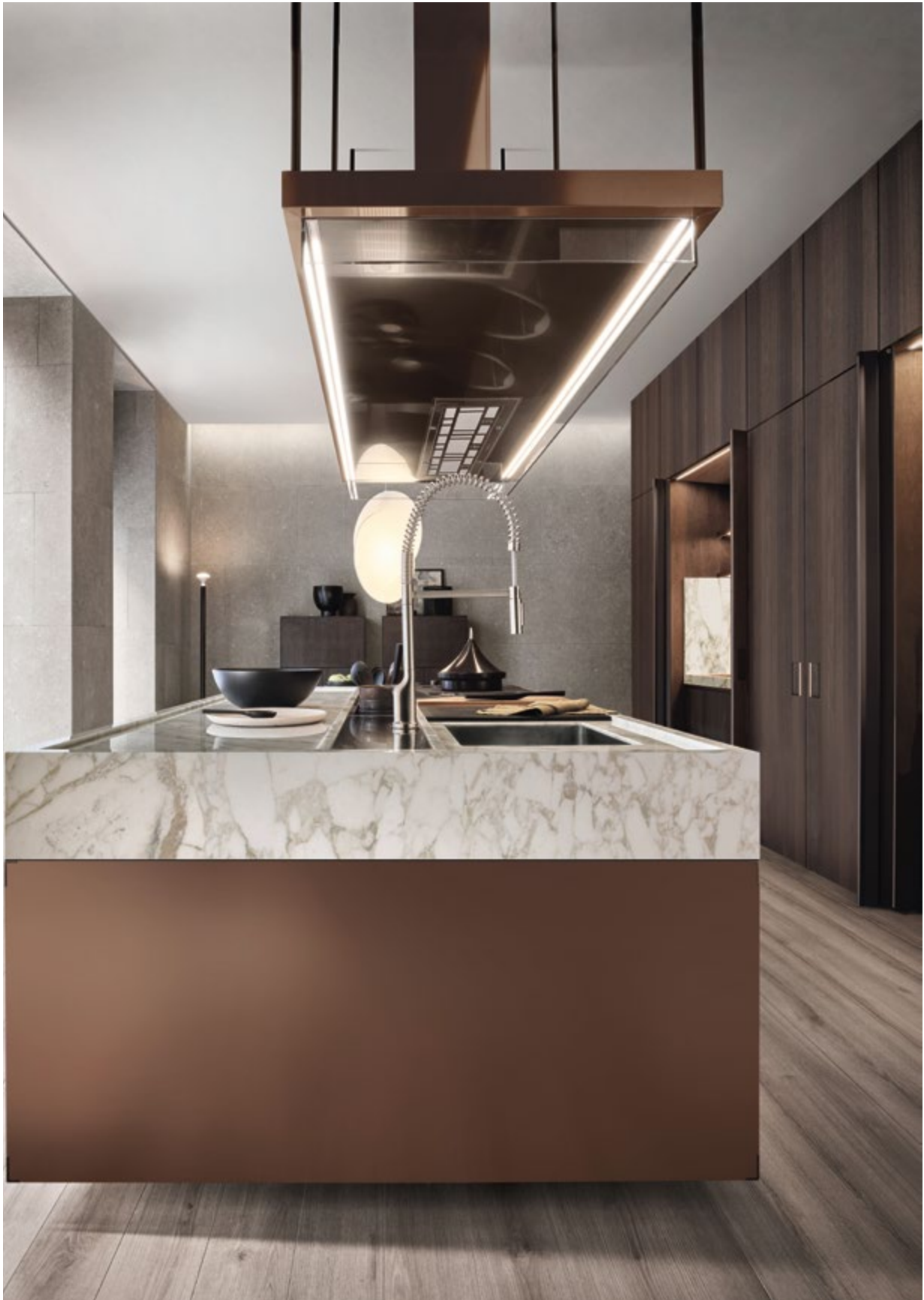
AXOR kitchen mixers combine striking beauty with intuitive technology, masterful design with precision engineering. Ensuring effortless ease of operation for all who appreciate the art of cooking, from amateur gastronomes to professional chefs de cuisine, they can also inspire culinary evolution. Opening new aesthetic vistas in the kitchen, the mixers are offered in up to fifteen AXOR FinishPlus surfaces, from Stainless Steel-Optic to Polished Black Chrome, Brushed Nickel to Polished Red Gold.

Designed by

Antonio Citterio  
Philippe Starck  
PHOENIX

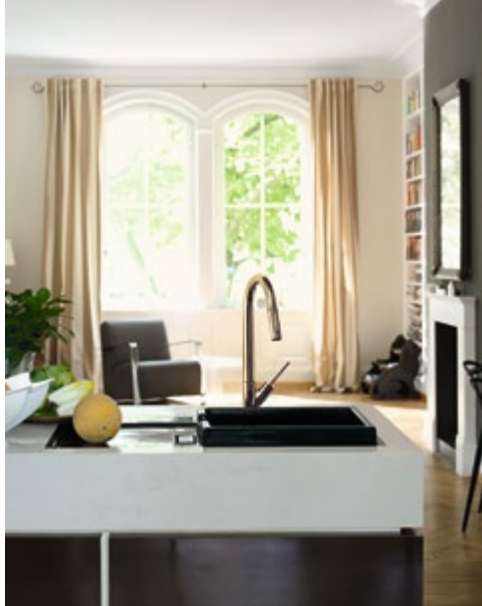
AXOR KITCHEN





The AXOR Citterio kitchen faucet combines astonishing beauty with exceptional ease of use.

@Courtesy of Arclinea



A minimalist marvel. Inspired by the archetypal hand pump, the AXOR Starck kitchen faucet evokes our historical connection with water.



AXOR Citterio M is the definition of discreet, urban chic. Available in distinctive angular and parabolic variations, the faucet features a signature high spout that tapers flawlessly into an optional pull-out spray with dual settings, shower and direct.

AXOR Uno embodies the purist ethos of simplicity, balance and self-evident function. Easily configured for a range of spaces, from wide open to confined, the integrated telescopic spout can be conveniently extended and swiveled around, vastly increasing the radius of operation.



# AXOR

# FinishPlus

Robust, distinctive and personal: AXOR FinishPlus surfaces unlock a plethora of new possibilities to bring personal expression to your bathroom. Through a combination of meticulous craftsmanship and cutting-edge technologies, each finish is made to the highest standards of quality, color-fastness and scratch-resistance.

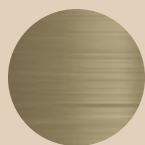
Whether you want to accentuate the design of a product or blend it seamlessly into the palette of your bathroom: AXOR FinishPlus offers a vast variety of colors and finish types to tailor any AXOR product to your personal taste. With most popular surfaces constantly in stock and the remaining finish types custom-made and shipped within six weeks, AXOR FinishPlus offers not only the best in personalization, but also the ultimate in convenience.

## Choose your color.

ELECTROPLATED  
FINISHES



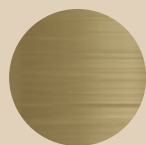
Chrome  
-000



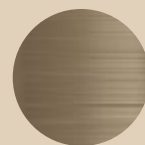
Brushed Brass  
-950



Polished Gold Optic  
-990



Brushed Gold Optic  
-250

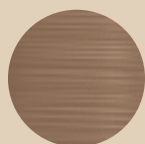


Brushed Bronze  
-140

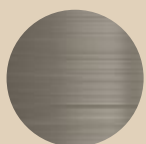


Polished Red Gold  
-300

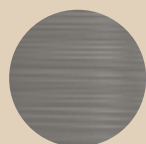
PVD SURFACES



Brushed Red Gold  
-310



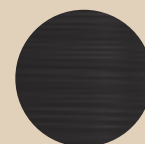
Brushed Nickel  
-820



Stainless Steel Optic  
-800



Polished Black Chrome  
-330



Brushed Black Chrome  
-340

LACQUERED  
SURFACES



Matt Black  
-670



Matt White  
-700





# AXOR Signature



Refining the special: AXOR Signature is an exclusive in-house service that makes any AXOR product one-of-a-kind. From local-language inscriptions and spout-length adaptations to custom engravings and the development of completely new products, AXOR Signature offers a comprehensive variety of services to meet the unique demands of any imaginable project and make it personal.

## Make it yours.

BI-COLOR FINISHES



For those who can't decide on just one color, AXOR Signature offers the possibility to finish products in custom bi-color configurations, opening up a variety of new, exciting options to express individual tastes in the bathroom. The possibilities are virtually endless.

CUSTOM SYMBOLS FOR  
ENHANCED COMMUNI-  
CATION



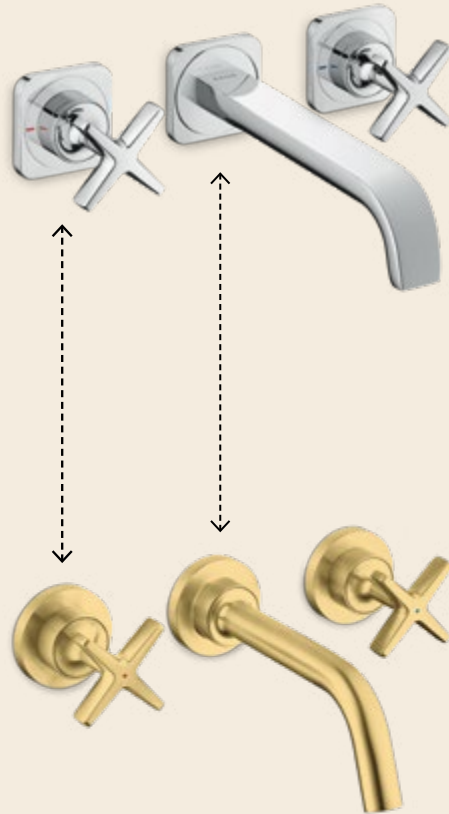
AXOR Signature's labeling service does not just enhance the aesthetics of a product. It can also enhance the operation of a product itself. For hotel bathrooms, as an example, AXOR Signature provides the possibility to create lasered symbols or bespoke hot/cold markings to communicate a product's operation to first-time guests.

HIGH-PRECISION ENGRA-  
VINGS AND MARKS



From personal emblems to logos and coats of arms: Labels and inscriptions can provide bathrooms with an extra layer of communication—and personality—that's especially important to projects in the hospitality industry. Meeting this demand, AXOR Signature offers a custom labeling and engraving service of the highest quality to set your bathroom apart.

COMPONENT MIX



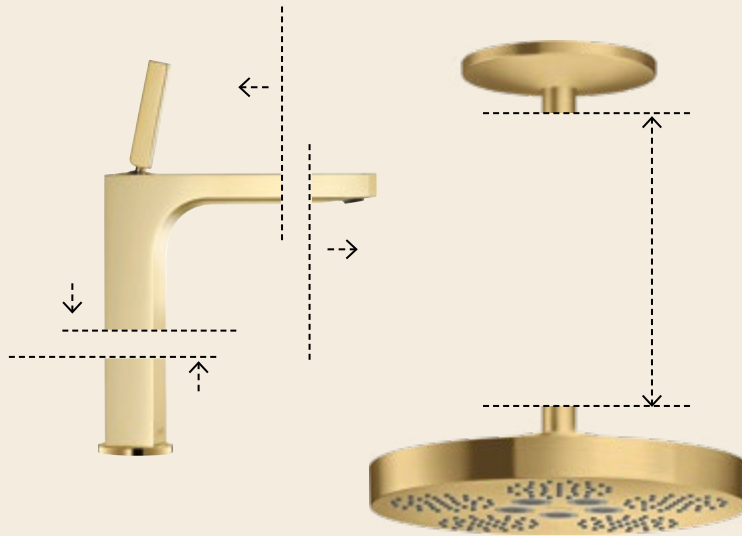
AXOR Signature allows customers to select and combine different components across AXOR collections to best match the individual character of your projects. Simple yet effective, the service is both a testament to the universal, enduring visions of each AXOR designer as it is an inventive method to creating new and inspiring interpretations of their collections.



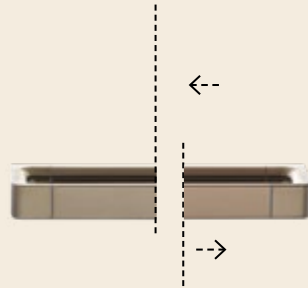
HANDLE ENGRAVINGS



A delight to the eyes and touch: For select products, AXOR Signature offers a wide variety of custom 3D handle textures created by our world-renowned design partners. For other custom patterns, AXOR Signature is always ready to help create one of your own.



LENGTH ADAPTION



Each bathroom comes with its own, unique set of demands. Planners may, for example, need to lengthen or shorten a product to achieve a different distance from spout to washbasin, or from ceiling to shower head. AXOR Signature provides partners and customers the freedom to adapt a product as they wish, while maintaining the functionality, operation and unique aesthetic of its design.

NEW DEVELOPMENT



From precision-cut gemstone handles to custom-made soap dishes: With extensive technical expertise and decades of experience in collaborative product development, our AXOR Signature experts are well-suited and eager to work with partners and customers on bespoke, project-specific designs. The only limit is your imagination.

## CONTACT

### HEADQUARTERS

Hansgrohe SE/P.O. Box 1145/D-77757 Schiltach  
Tel. +49 7836 51-0/Fax +49 7836 51-1300/info@axor-design.com/axor-design.com

### AUSTRALIA

Hansgrohe Pty Ltd./Unit 4/71 Victoria Crescent, Abbotsford/VIC 3067/Australia  
Tel. +61 3 83 19 5753/info@axor-design.com.au/axor-design.com

### BELGIUM

Hansgrohe NV/Riverside Business Park/Boulevard Internationalelaan 55K/B-1070 Anderlecht  
Tel. +32 2 5 430140/Fax +32 2 5 379486/info@axor-design.be/axor-design.com

### BRAZIL

Hansgrohe Brasil Metais Sanitarios Ltda/Rua Cristiano Viana, 401/10º andar cj 1001/05411-000 Cerqueira César, São Paulo  
Tel. +55 11 3149-7070/Fax +55 11 3149-7099/info@axor-design.com/axor-design.com

### CROATIA

Hansgrohe d.o.o./Horvatova 82/10010 Zagreb/Croatia  
Tel. +385 1 56 30 800/Fax +385 1 56 30 899/info@axor-design.hr/axor-design.com

### DENMARK

Hansgrohe A/S/Jegstrupvej 6/DK-8361 Hasselager  
Tel. +45 86 287400/axor-design.com/dk

### UNITED ARAB EMIRATES

Hansgrohe SE DMCC Branch/Swiss Tower, Cluster Y/Jumeirah Lakes Towers, Office 1904/PO Box 34216  
Tel. +971 4 4 48 0 200/Fax +971 4 4 48 0 299/sales.mea@axor-design.com/axor-design.com

### ESTONIA

Hansgrohe Eesti/Mäealuse 2/EE-12618 Tallinn  
Tel. +372 6826829/info@axor-design.com/axor-design.com

### HUNGARY

Hansgrohe Kft./Forgách utca 11-13/1139 Budapest  
Tel. +36 1 2 369090/info@axor-design.hu/axor-design.com

### INDIA

Hansgrohe India Pvt. Ltd /7th Floor, Office No. 5/Fountainhead Tower 2/Viman Nagar/Pune, Maharashtra, 411014/India  
Tel.+ 91 2066259500/info@axor-design.com/axor-design.com

### JAPAN

Hansgrohe Japan K.K./Tennozu First Tower 3F/2-2-4 Higashi Shinagawa/Shinagawa-ku/Tokyo 140-0002/Japan  
Tel. +81 3 5 715-3073/Fax +81 3 5 7153088/info@axor-design.jp/axor-design.com

### LATVIA

Hansgrohe Latvia/Raiņa str. 14/LV-3913 Iecava  
Tel. +371 29 229029/info@axor-design.lv/axor-design.com

### LITHUANIA

Hansgrohe atstovybė/Santoza/Ulonųg. 5/08240 Vilnius  
Tel. +370 5 20 43291/info@axor-design.lt/axor-design.com

### SINGAPORE

Hansgrohe Pte. Ltd./69 Mohamed Sultan Road/Singapore 239015  
Tel. +65 6884 5060/Fax +65 6884 5070/info@axor-design.com.sg/axor-design.com

### SOUTH AFRICA

Hansgrohe South Africa (Pty) Ltd./30 Archimedes Street/Kramerville Johannesburg/2090  
Tel. 011 445 0000/sales@hansgrohe.co.za/www.axor-design.co.za

### SWEDEN

Hansgrohe AB  
Tel. +46 31 216 600/axor-design.com/se

### UNITED KINGDOM

Hansgrohe Limited/Units D1 and D2/Sandown Park Trading Estate/Royal Mills/KT10 8 BL Esher Surrey  
Tel. +44 1372 472 001/Fax +44 1372 470 670/info@axor-design.co.uk/axor-design.com

IMPRINT

PUBLISHER  
AXOR/Hansgrohe SE

CONCEPT AND DESIGN  
Tatiana van Houten, Germany

COPYWRITING  
Alex Marashian, Germany

3D ARTIST  
ACPV Architects, Milan  
eder GmbH  
Liganova  
SupaCGI

PHOTOGRAPHY  
Uli Maier  
Peter Kuhnle  
Peer Lindgreen  
PHOENIX  
Mattia Zoppelaro/Contrasto/laif

PHOTOGRAPHY AXOR EXPERIENCES  
ChouChou, Paris: Nicolas Anetson  
La Co(o)rniche, Pyla sur mer: La Co(o)rniche  
Beyond by Geisel, München: Tom Hegen  
Maisonette P 155, Stuttgart: Eric Laignel  
Country House Tristan Auer, Normandie: Amaury Laparra  
Sonne Seehotel, Eich (Schweiz): Jochen Splett Fotografie

POSTPRODUCTION  
eder GmbH

PRINT  
C.Maurer GmbH & Co. KG

PUBLICATIONDATE  
March 2025

AXOR/Hansgrohe SE  
Postfach 1145  
77757 Schiltach  
Germany  
[info@axor-design.com](mailto:info@axor-design.com)

[AXOR-DESIGN.COM](http://AXOR-DESIGN.COM)